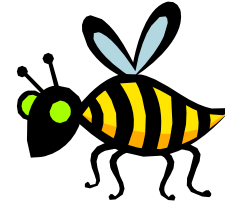


Historic Letter to the Editor Rubric
Spelling Bee: A Cultural Mirror



	Excellent	Proficient	Basic
Analyzing Perspectives	Consistently identifies and takes a stance on points of agreement or disagreement with article.	Identifies but does not take a clear stance on points of agreement or disagreement with article. Lacks conviction.	Ignores or makes up points of agreement or disagreement with article. No clear stance.
Connection to Newspaper Article	Writing is supported by evidence or quotes from article.	Writing is inconsistently supported with evidence or quotes from article.	Writing is unrelated to article; opinions are unsupported.
Historical Accuracy	Multiple examples of phrasing and vocabulary consistent with time period.	Some evidence of historically accurate phrasing and vocabulary from the time period.	Little or no use of phrasing or vocabulary from the time period.
Conventions	Correct grammar, spelling, and punctuation.	Mostly correct grammar, spelling, and punctuation.	Grammar, spelling, and punctuation need extensive work.
Historical Newspaper Document Analysis	All five analyses carefully and thoughtfully completed. Questions (#5) require high levels of critical thinking.	Five analyses mostly completed; some items missing. Some questions (#5) lack high levels of critical thinking.	Lack of effort evident in analyses; missing major portions. Questions (#5) missing or basic yes/no or one-answer questions.